



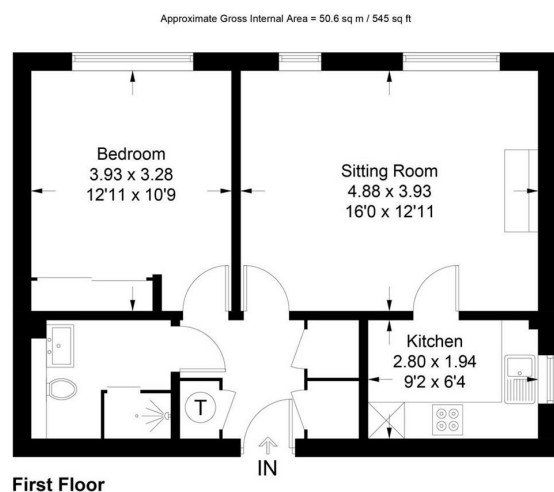
7 Greville Court Greville Park Road, Ashted, KT21 2QN

Price Guide £215,000

- OVER 55'S APARTMENT
- LOUNGE/DINING ROOM
- FITTED WARDROBES
- COMMUNAL LOUNGE AND LAUNDRY ROOM
- LANDSCAPED COMMUNAL GARDENS
- SOUGHT AFTER DEVELOPMENT
- FITTED KITCHEN AND BATHROOM
- NO ONWARD CHAIN
- AMPLE RESIDENTS PARKING
- EASY ACCESS TO THE VILLAGE

Conveniently located close to Ashted Village High Street, this one-bedroom apartment is offered with no onward chain. There are communal gardens and lounge, well equipped laundry room and kitchen for all to enjoy. *Sold with 99-year Lease upon completion.

A communal hall leads to the property on the first floor. The spacious lounge/dining room is flooded with natural light which leads into the kitchen featuring a range of wall/base cupboards with built-in oven and hob. The double bedroom has fitted wardrobes and is served by bathroom comprising an updated walk-in shower, wash hand basin, w.c. and heated towel rail. The flat has emergency pull cords in each room which can be connected to an emergency 24/7 helpline if desired.



This plan is for layout guidance only. Not drawn to scale unless stated. Windows and door openings are approximate. Whilst every care is taken in the preparation of this plan, please check all dimensions, shapes and compass bearings before making decisions reliant upon them. (ID917419)
www.bagshawandhardy.com © 2022

Tenure	Leasehold
Lease	63 years *
Service Charge	£4,088.18 pa
Ground Rent	£501.12 pa
EPC	C
Council Tax Band	D



66 Tudor House, Ashted, Surrey, KT21 1AW
Tel: 01372 271880 **Email:** ashted@patrickgardner.com
www.patrickgardner.com

These particulars, whilst believed to be accurate are set out as a general outline only for guidance and do not constitute any part of an offer or contract. Intending purchasers should not rely on them as statements of representation of fact, but must satisfy themselves by inspection or otherwise as to their accuracy. No person in this firm's employment has the authority to make or give any representation or warranty in respect of the property.

